

# Millburn

## February 2025 Market Snapshot

Units	Address	Style	Bedrms	Baths	DOM	Orig. List Price	List Price	Sales Price	SP:LP	Total Assessment	SP:AV
1	206 Main Street U76A	OneFloor	2	1.0	49	\$375,000	\$375,000	\$400,000	106.67%	\$229,700	1.74
2	673 Ridgewood Road	Ranch	1	1.1	49	\$438,000	\$438,000	\$438,000	100.00%	\$286,000	1.53
3	387 Wyoming Avenue	Colonial	5	3.2	14	\$1,695,000	\$1,695,000	\$1,500,000	88.50%	\$776,500	1.93
AVERAGE					37	\$836,000	\$836,000	\$779,333	98.39%		1.73

### *"Active"* Listings in Millburn

Number of Units: 8  
 Average List Price: \$1,597,987  
 Average Days on Market: 17

### *"Under Contract"* Listings in Millburn

Number of Units: 5  
 Average List Price: \$1,187,600  
 Average Days on Market: 17

# Millburn 2025 Year to Date Market Trends

YTD	January	February	March	April	May	June	July	August	September	October	November	December	YTD AVG
Days on Market	39	37											38
List Price	\$895,333	\$836,000											\$865,667
Sales Price	\$943,667	\$779,333											\$861,500
SP:LP%	105.48%	98.39%											101.94%
SP to AV	1.55	1.73											1.64
# Units Sold	3	3											6
3 Mo Rate of Ab	1.40	2.33											1.87
Active Listings	6	8											7
Under Contracts	4	5											5

## Flashback! YTD 2024 vs YTD 2025

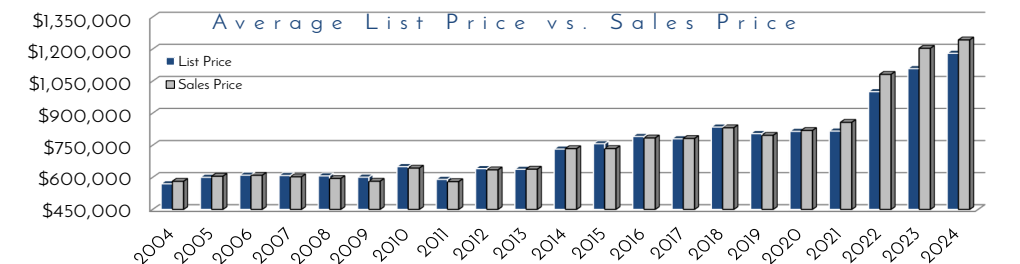
YTD	2024	2025	% Change
DOM	20	38	95.17%
Sales Price	\$901,110	\$861,500	-4.40%
LP:SP	102.65%	101.94%	-0.70%
SP:AV	1.42	1.64	15.63%

Prominent Properties

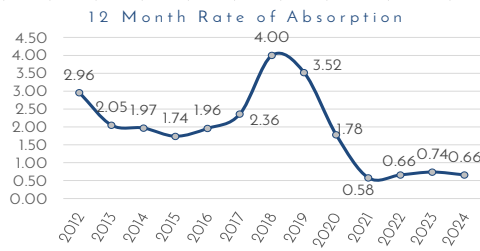
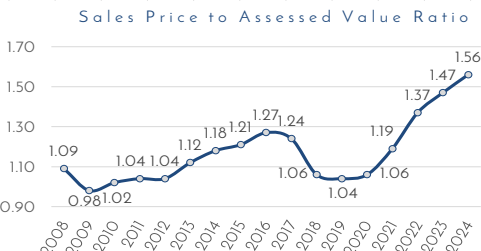
**Sotheby's**  
INTERNATIONAL REALTY

YTD	2024	2025	% Change
# Units Sold	9	6	-33.33%
Rate of Ab 3 Mo	1.66	1.87	12.35%
Actives	3	7	180.00%
Under Contracts	6	5	-18.18%

## Millburn Yearly Market Trends



Year	2004	2005	2006	2007	2008	2009	2010	2011	2012	2013	2014	2015	2016	2017	2018	2019	2020	2021	2022	2023	2024
LP	\$570K	\$600K	\$610K	\$608K	\$607K	\$601K	\$650K	\$641K	\$637K	\$732K	\$757K	\$791K	\$780K	\$835K	\$804K	\$815K	\$816K	\$1,001M	\$1,108M	\$1,180M	\$1,242M
SP	\$581K	\$605K	\$610K	\$602K	\$595K	\$582K	\$643K	\$635K	\$638K	\$734K	\$734K	\$784K	\$782K	\$832K	\$796K	\$819K	\$857K	\$1,081M	\$1,203M	\$1,242M	



## Millburn Yearly Market Trends

